

2-Port USB KVM Switch with File Transfer

USER MANUAL

CS62T

FCC INFORMATION

This equipment has been tested and found to comply with the limits for a Class B digital device, pursuant to Part 15 of the FCC Rules. These limits are designed to provide reasonable protection against harmful interference in a residential installation. This equipment generates, uses and can radiate radio frequency energy, and if not installed and used in accordance with the instruction manual, may cause interference to radio communications. However, there is no guarantee that interference will not occur in a particular installation. If this equipment does cause harmful interference to radio or television reception, which can be determined by turning the equipment off and on, the user is encouraged to try to correct the interference by one or more of the following measures:

- ◆ Reorient or relocate the receiving antenna;
- ◆ Increase the separation between the equipment and receiver;
- ◆ Connect the equipment into an outlet on a circuit different from that which the receiver is connected;
- ◆ Consult the dealer or an experienced radio/television technician for help.

RoHS

This product is RoHS compliant.

SJ/T 11364-2006

The following contains information that relates to China.

部件名称	有毒有害物质或元素					
	铅	汞	镉	六价铬	多溴联苯	多溴二苯醚
电器部件	●	○	○	○	○	○
机构部件	○	○	○	○	○	○

○: 表示该有毒有害物质在该部件所有均质材料中的含量均在SJ/T 11363-2006规定的限量要求之下。

●: 表示符合欧盟的豁免条款, 但该有毒有害物质至少在该部件的某一均质材料中的含量超出SJ/T 11363-2006的限量要求。

×: 表示该有毒有害物质至少在该部件的某一均质材料中的含量超出SJ/T 11363-2006的限量要求。



CS62T USER MANUAL

ONLINE REGISTRATION

International	http://support.aten.com
North America	http://www.aten-usa.com/product_registration

TELEPHONE SUPPORT

International	886-2-8692-6959
China	86-10-5255-0110
Japan	81-3-5615-5811
Korea	82-2-467-6789
North America	1-888-999-ATEN ext 4988
United Kingdom	44-8448-158923

TECHNICAL SUPPORT

- ◆ For international online technical support – including troubleshooting, documentation, and software updates:
<http://support.aten.com>
- ◆ For North American technical support:

Email Support		support@aten-usa.com
Online Technical Support	Troubleshooting Documentation Software Updates	http://www.aten-usa.com/support
Telephone Support		1-888-999-ATEN ext 4998

PACKAGE CONTENTS

The CS62T package contains the following items:

- ◆ 1 CS62T 2-Port USB KVM Switch with File Transfer
- ◆ 1 User Manual*
- ◆ 1 Quick Start Guide

Check to make sure that all the components are present and that nothing got damaged in shipping. If you encounter a problem, contact your dealer.

Read this manual thoroughly and follow the installation and operation procedures carefully to prevent any damage to the unit, and/or any of the devices connected to it.

* Features may have been added to the CS62T since this manual was printed. Please visit our website to download the most up-to-date version of the manual.

Copyright © 2011 ATEN® International Co., Ltd.
Manual Date: 2011-07-25

ATEN and the ATEN logo are trademarks of ATEN International Co., Ltd. All rights reserved. All other trademarks are the property of their respective owners.

OVERVIEW

The CS62T improves on prior models in the Petite series, by combining a 2-port KVM switch with a mouse port that can serve as a USB hub, enabling it to provide USB peripheral sharing and USB file sharing* between the connected computers – ideal for syncing files and folders between portable and desktop computers.

In addition, the CS62T offers enhanced Video DynaSync™ technology. Video DynaSync™ stores the console monitor's EDID (Extended Display Identification Data) to optimize display resolution.

Multiplatform support along with hotkey and USB mouse computer selection – allowing you to control port switching from the desktop while the switch can be placed in a convenient, out of the way, location – provide the ultimate in desktop KVM switching convenience, and features.

Featuring an unbeatable combination of USB peripheral sharing, USB file management, audio support for multimedia, and user-friendly operation, the CS62T offers the utmost in desktop KVM switching functionality.

Note: File management AP is supported by Windows OS only.

FEATURES

- ◆ One USB console controls two USB interface computers
- ◆ USB 2.0 File Management – transfer files between Windows-based computers – sync files and folders
- ◆ USB mouse port can be used for USB hub and USB peripheral sharing
- ◆ Computer selection via hotkeys and USB mouse¹
- ◆ Hotkey selection for OS and keyboard language
- ◆ Audio-enabled – full bass response for 2.1 surround sound
- ◆ Multiplatform support – Windows, Linux, Mac, and Sun
- ◆ Compact design, built-in all-in-one cables
- ◆ Superior video quality – up to 2048 x 1536; DDC2B
- ◆ Video DynaSync™ – exclusive ATEN technology – stores the console monitor's EDID information to eliminate boot-up display problems and optimize resolution when switching between ports
- ◆ Supports multimedia keyboards; most gaming keyboards; and wireless keyboards
- ◆ Supports most multifunction mice and wireless mice
- ◆ Mac/Sun keyboard support and emulation²
- ◆ Auto Scan function to monitor computer operation
- ◆ Power on detection – automatically switches to the first powered on computer.
- ◆ Supports hot plugging – add or remove computers without powering off the switch

Note: 1. Mouse port switching is only supported when using a USB 3-key wheel mouse.

2. PC keyboard combinations emulate Mac/Sun keyboards; Mac/Sun keyboards work only with their own computers.

SYSTEM REQUIREMENTS

CONSOLE

- ◆ A VGA, SVGA, or multisync monitor capable of the highest resolution that you will be using on any computer in the installation
- ◆ A USB Keyboard and a USB Mouse
- ◆ Microphone and speakers (optional)

COMPUTERS

The following equipment must be installed on each computer that is to be connected to the system:

- ◆ A VGA, SVGA, or multisync video port
- ◆ USB Type A ports
- ◆ Microphone and speaker ports (optional)

CABLES

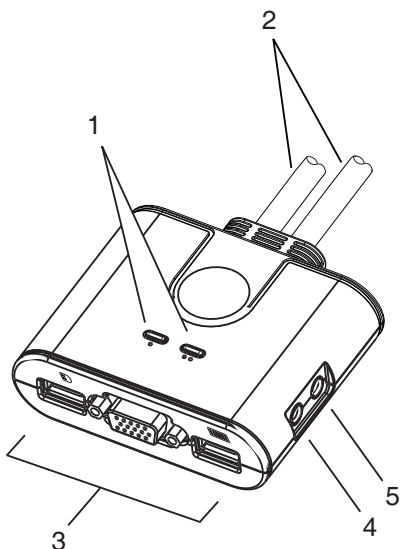
- ◆ The cables necessary to install and operate the CS62T are built into the switch. There is no need for a separate cable purchase.

SUPPORTED OPERATING SYSTEMS*

OS		Version
Windows		2000 and higher
Linux	RedHat	9.0 and higher
	SuSE	10 and higher
	Mandriva (Mandrake)	9.0 and higher
	Debian	3.1, 4.0
	Ubuntu	7.04, 7.10
UNIX	FreeBSD	3.51 and higher
	Sun	Solaris 8 and higher
Novell	Netware	5.0 and higher
Mac		OS 9 and higher
DOS		6.2 and higher

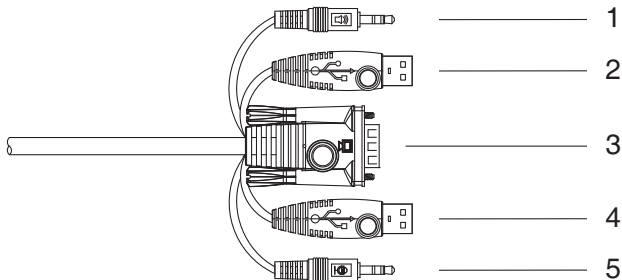
Note: File management AP is supported by Windows OS only.

COMPONENTS



No.	Component	Description
1	Port LEDs	A port LED lights to indicate that the computer attached to its corresponding port has the KVM focus. See <i>LED Display Status</i> , page 9 for further details.
2	KVM Cables	These cables attach to the computers in your installation.
3	Console Ports	The cables from your USB mouse, monitor, and USB keyboard plug in here. The ports are marked with an icon on the bottom panel to indicate which is which. Note: The mouse port can be used for USB peripheral sharing. To do so, plug the peripherals and your mouse into a USB hub, then plug the hub into the mouse port.
4	Speaker Jack	Your console speakers plug in here.
5	Microphone Jack	Your console microphone plugs in here.

KVM CABLE CONNECTORS



No.	Connector	Description
1	Speaker (Pink)	Plugs into the computer's speaker port.
2	Keyboard/Mouse (Purple)	Plugs into any available Type A USB port on the computer.
3	Video	Plugs into the computer's VGA port.
4	File Transfer (Black)	Plugs into any available Type A USB port on the computer. Note: If there is only one USB port on the computer, you can connect a USB hub to the computer, then plug the Keyboard/Mouse cable (purple) and then the File Transfer cable (black) into the USB hub.
5	Microphone (Green)	Plugs into the computer's speaker port.

LED DISPLAY STATUS

Status	Indication
Orange On / Off	Port is selected / Port is not selected
Green On	Port is connected to an active computer
Flashing (one)	Port is connected to an active computer and is being accessed in Auto Scan Mode or under Keyboard/ Mouse USB Sync
Flashing (all)	File transfer/sync is in operation

INSTALLATION STEPS



1. Make sure that the power to any device that you connect to the installation has been turned off. You must unplug the power cords of any computers that have the *Keyboard Power On* function.
2. Make sure that all devices you will be installing are properly grounded.

To set up the CS62T, refer to the installation diagram on the following page (the numbers in the diagrams correspond to the steps, below) and do the following:

1. Plug your USB keyboard, USB mouse, and monitor into their respective ports on the CS62T.

Note: 1. The mouse port can be used for USB peripheral sharing. To do so, plug the peripherals and your mouse into a USB hub, then plug the hub into the mouse port.

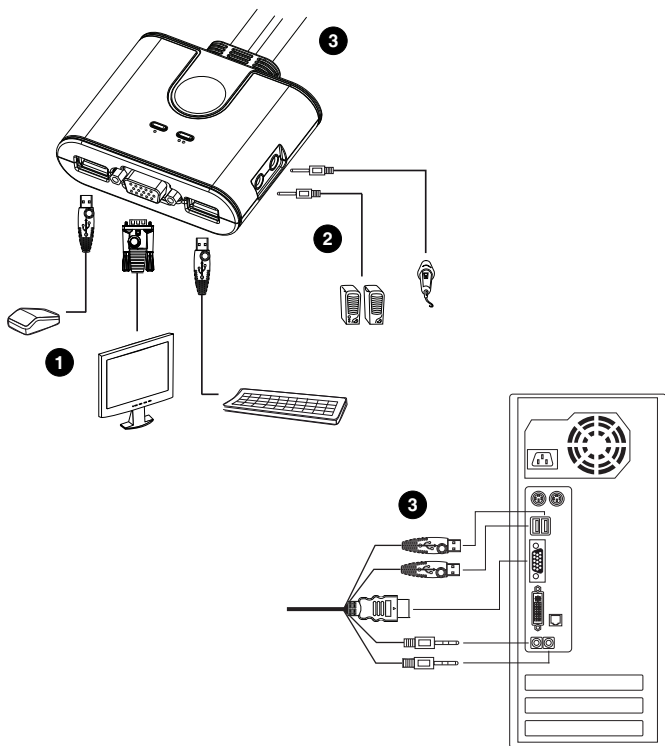
2. If you are using a wireless keyboard and mouse combo, the receiver must plug into the CS62T's keyboard port in order for the hotkeys to function.
-

2. Plug your microphone and speakers into their respective jacks.
3. Plug the USB (purple first, then black), video, and audio connectors of the attached KVM cables into their respective ports on the computers you are installing.

Note: If there is only one USB port on the computer, you can connect a USB hub to the computer, then plug the Keyboard/Mouse cable (purple) and then the File Transfer cable (black) into the USB hub.

After you are all cabled up, you can power on the computers and peripherals. The CS62T's power on default is to link to the first computer that is powered on.

INSTALLATION DIAGRAM



PORT SWITCHING

Tap the Scroll Lock key twice to toggle the KVM, USB, and Audio focus between the two ports.

Note: If you prefer, you have the Ctrl key be the toggle key (see *Hotkey Summary Table*, page 13)

MOUSE PORT SELECTION

Simply double-click the scroll wheel on your USB mouse to switch between ports. The mouse port-switching function allows you to toggle back and forth between the ports.

Note:

1. This feature is only supported by USB 3-key scroll wheel mice.
2. The default setting is OFF.
3. This feature is only supported when mouse emulation is also enabled.

HOTKEY PORT SELECTION

All hotkey operations begin by invoking hotkey mode:

1. Hold down the Num Lock key.
2. Press and release the minus key.
3. Release the Num Lock key..

Note: If using [Num Lock] conflicts with other programs, [Ctrl] can be used instead (see *Hotkey Summary Table*, page 13)

HOTKEY SUMMARY TABLE

Combination		Configuration
[Num Lock] [-]	[H]	To toggle between the default ([Num Lock] [-]) and alternate ([Ctrl] [F12]) hotkey mode invocation keys:
	[T]	To toggle between the default ([Scroll Lock] [Scroll Lock]) and alternate ([Ctrl][Ctrl]) port switching keys:
	[N]	To Enable / Disable keyboard hotkey emulation. (Disable for use with gaming keyboards.)
	[M]	To Enable / Disable mouse emulation.
	[W]	To Enable / Disable mouse port switching.
	[E]	To Enable / Disable power-on detection.
	[D] [Enter]	To invoke Video DynaSync™
	[F2]	To activate Mac keyboard mapping:
	[F3]	To activate Sun keyboard mapping:
	[F10]	To auto detect the keyboard operating platform:
	[F4]	To list the current switch settings via the paste function of a text editor.
	[F5]	To perform a USB keyboard and mouse reset:
	[F6] [nn] [Enter]	To set the keyboard language layout: Note: nn is a two-digit number that represents one of the following keyboard language codes: 33 – US English 08 – French 15 – Japanese
		[r] [Enter]
	[A]	To start Auto Scanning with default 5 sec. scan interval
	[n] [Enter]	To change the scan interval after Auto Scan has started. Note: n is a number from 1–4 as follows: 1 = 3 sec; 2 = 5 sec; 3 = 10 sec; 4 = 20 sec.
	[Scroll Lock] [Scroll Lock]	To switch ports.
	[Esc] or [Space Bar]	To exit hotkey or auto scan mode.

FILE MANAGEMENT

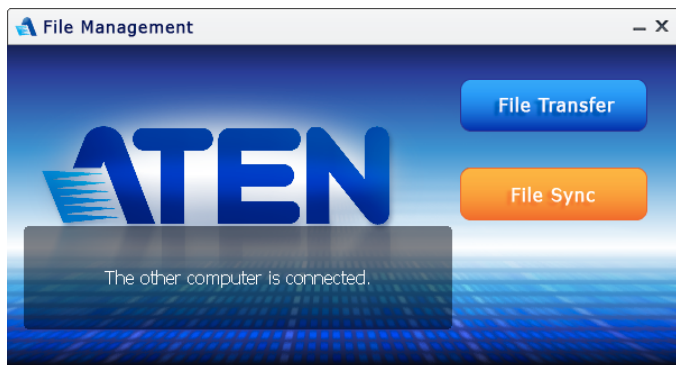
The files and drivers necessary for performing file management operations are built into the CS62T's firmware. The first time you plug the file transfer USB cables into your computers, Windows finds and installs them. When you open the Windows file Explorer, two new "drives" appear: ATEN FM, and Virtual Link.

Note: Virtual Link simply provides a buffer for the file management utility; it performs no other function.

To perform file management operations, click the File Management icon on both computers.

Note: If the file management main screen doesn't appear, click the file management executable file that appears in the folder that comes up.

The file management main screen appears:



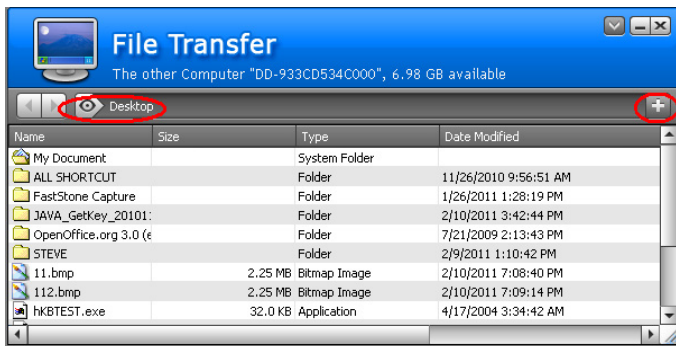
The main screen offers two operations: *File Transfer* and *File Sync*, as described in the sections that follow.

Note:

1. File Transfer and File Sync cannot be activated on a single PC or on both the console and remote PCs at the same time.
2. For the best file transfer performance, the recommended system memory capacity is 4GB or above.

FILE TRANSFER

To perform file transfer operations, click the File Transfer button on the main screen. A folder containing the files on the opposite computer's desktop appears on your screen:

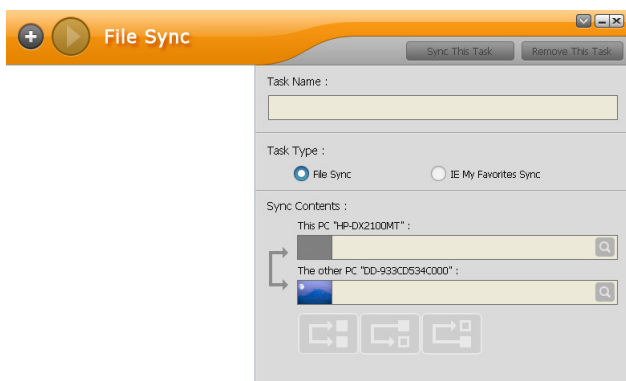


This folder works just like any other folder on your system. You can drag and drop files and folders to and from this folder just as if it were a folder that originated on your system.

- ◆ To navigate to other files and folders on the opposite computer, click the button just to the left of the folder name.
- ◆ To add a new folder under the current one, click the plus sign (+) at the right of the folder name bar.

FILE SYNC

File Sync allows you sync entire folders between the two computers. The File Sync screen allows you to set up the files/folders you want to sync:



Each File Sync operation is called a task. To begin sync operations:

1. Click the + button at the upper left to add a task.
2. If you want to, give the task a name, key the name in the Task Name field.
3. Select the task type (Folder Sync is the default).
4. Navigate to the desired folder on the Port 1 PC.
5. Navigate to the desired folder on the Port 2 PC.
6. Select your sync choice:
 - ◆ Merge the two folders. In other words, copy the files from the Port 1 folder to the Port 2 folder, and copy the files from the Port 2 folder to the Port 1 folder – so that both folders are the same, and both contain all the files that were originally on each of them separately.
 - ◆ Copy the files from the Port 1 folder to the Port 2 folder, but do not copy the files from the Port 2 folder to the Port 1 folder.
 - ◆ Copy the files from the Port 2 folder to the Port 1 folder, but do not copy the files from the Port 1 folder to the Port 2 folder.










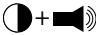





7. Once you have made your selections, click Sync This Task, at the top right of the screen.

If you like, you can set up more than one task. Each one appears as a list entry in the left panel.

- ◆ To run the tasks one by one, first select the desired task in the left panel, then click Sync This Task, at the top right of the screen.
- ◆ To run them all at the same time, click the triangle button (at the right of the + button) at the top left of the screen.
- ◆ To remove a task, first select the desired task in the left panel, then click Remove This Task, at the top right of the screen.

Note: This utility has online help to guide you through each of the procedures.

KEYBOARD EMULATION

PC Keyboard	Mac Keyboard	PC Keyboard	Sun Keyboard
[Shift]	Shift	[Ctrl] [T]	Stop
[Ctrl]	Ctrl	[Ctrl] [F2]	Again
		[Ctrl] [F3]	Props
[Ctrl] [1]		[Ctrl] [F4]	Undo
[Ctrl] [2]		[Ctrl] [F5]	Front
[Ctrl] [3]		[Ctrl] [F6]	Copy
[Ctrl] [4]		[Ctrl] [F7]	Open
[Alt]	Alt	[Ctrl] [F8]	Paste
[Print Screen]	F13	[Ctrl] [F9]	Find
[Scroll Lock]	F14	[Ctrl] [F10]	Cut
	=	[Ctrl] [1]	
[Enter]	Return	[Ctrl] [2]	
[Backspace]	Delete	[Ctrl] [3]	
[Insert]	Help	[Ctrl] [4]	
[Ctrl] 	F15	[Ctrl] [H]	Help
			Compose
			

Note: When using key combinations, press and release the first key (Ctrl), then press and release the activation key.

TROUBLESHOOTING

Symptom	Possible Cause	Action
Mouse and/or Keyboard not responding.	Improper mouse and/or keyboard reset.	Unplug the cable(s) from the console port(s), then plug it/them back in.
	KVM switch needs to be reset.	Power off all devices on the installation; unplug the KVM switch from the computers; wait five seconds; then replug the switch and power up the computers.
USB devices not responding.	USB ports need to reset.	Unplug the device's USB cable from the USB port on the switch's rear panel, then plug it back in.
Device not recognized (Windows).	Windows timing problem.	Unplug the KVM cable from the computer's USB port; go into Windows' <i>System Settings</i> and remove the <i>Unknown Device</i> entry; plug the KVM cable back in. Windows will now recognize the device.
Cannot switch ports by pressing [Scroll Lock] twice	Keyboard is incompatible with Scroll Lock invocation.	Switch to the Alternate port switching keys (see <i>Hotkey Configuration</i> , page 11).
Cannot invoke Hotkey Mode using [Num Lock][-]	Incorrect operation for invoking Hotkey Mode.	Hold the [Num Lock] key, press and release the [Minus] key, then release the [Num Lock] key. The [Caps Lock] and [Scroll Lock] LEDs will flash together to indicate that the unit is in Hotkey Mode.
	Keyboard is incompatible with [Num Lock] invocation.	Switch to the alternate Hotkey Mode invocation keys (see <i>Hotkey Configuration</i> , page 11).
The switch does not power on when connected to the PC	The PC's BIOS boot sequence assigns the CS62T as a CD ROM or Flash drive.	Edit your PC's BIOS boot sequence and assign the hard drive (HDD) as the primary boot device. Refer to your PC's user manual for detailed steps on how to edit your BIOS settings or call the PC manufacturer's customer support.

FACTORY DEFAULT SETTINGS

Setting	Default
Port Switching	[Scroll Lock] [Scroll Lock]
Hotkey Invocation	[Number Lock] + [-]
Auto Scan Interval	5 seconds
Port Switching Keys	On
Keyboard Operating Platform	PC compatible

SPECIFICATIONS

Function		CS62T	
Computer Connections		2	
Port Selection		Hotkeys; Mouse	
Connectors	Console Ports	Keyboard	1 x USB Type A Female (White)
		Video	1 x HDB-15 Female (Blue)
		Mouse	1 x USB Type A Female (White)
		Speakers	1 x Mini Stereo Jack Female (Green)
		Microphone	1 x Mini Stereo Jack Female (Pink)
	KVM Ports	Keyboard / Mouse	2 x USB Type A Male (Purple)
		Video	2 x HDB-15 Male (Blue)
		Speakers	2 x Mini Stereo Jack Female (Green)
		Microphone	2 x Mini Stereo Jack Female (Pink)
	File Transfer		2 x USB Type A Male (Black)
LEDs	Selected / On Line	2 (Orange/Green)	
Cable Length	Computers	2 x 0.9 m	
Emulation	Keyboard / Mouse	USB	
Video		2048 x 1536; DDC2B	
Scan Interval		3, 5, 10, 20 secs. (default 5 secs.)	
Environment	Operating Temp.	0–50°C	
	Storage Temp.	-20–60°C	
	Humidity	0–80% RH, Non-condensing	
Physical Properties	Housing	Plastic	
	Weight	0.43 kg	
	Dimensions (L x W x H)	8.24 x 6.99 x 2.52 cm	

LIMITED WARRANTY

IN NO EVENT SHALL THE DIRECT VENDOR'S LIABILITY EXCEED THE PRICE PAID FOR THE PRODUCT FROM THE DIRECT, INDIRECT, SPECIAL, INCIDENTAL OR CONSEQUENTIAL DAMAGES RESULTING FROM THE USE OF THE PRODUCT, DISK OR ITS DOCUMENTATION.

The direct vendor makes no warranty or representation, expressed, implied, or statutory with respect to the contents or use of this documentation, and specially disclaims its quality, performance, merchantability, or fitness for any particular purpose.

The direct vendor also reserves the right to revise or update the device or documentation without obligation to notify any individual or entity of such revisions, or update. For further inquires please contact your direct vendor